

TEXTILE  
SOLUTIONS.

Bezema  
Colour  
Solutions.

**CHT**

SMART CHEMISTRY  
WITH CHARACTER.

## BEMACRON RS

■ ADVANCED

DISPERSE DYES FOR  
SAFE AND RAPID  
POLYESTER DYEINGS

# BEMACRON RS

## Dyes

A

### ADVANCED

Improved and adapted ranges for versatile and economical use which meet high demands.

### DESCRIPTION OF RANGE

#### BEMACRON RS

Universal rapid-dyeing range for the exhaust process with high colour build-up. With the fast bath exhaustion and excellent levelling properties, the BEMACRON RS dyes permit very short dyeing processes with good levelling and reproducibility. All BEMACRON RS dyes have an excellent dispersion stability and are therefore very suitable for dyeing cross-wound packages.



Light fastness	3/1 1/1 1/12
Weathering fastness	3/1 1/1 1/12
Washing fastness 60 °C <sup>2)</sup>	CC PES PA CO
Perspiration fastness <sup>2)</sup> alkaline	CC PES PA CO
Chlorine bath water 20 mg/l	CC
Fastness to dry heat fixation 180 °C	Staining PES
Coverage of material variations	
Suitability for blends	PES/CO PES/WO
Dyeing process	HT Carrier Thermosol
AOX <sup>1)</sup>	%
Heavy metal content	

Yellow RS 0.15 % 0.75 %	Golden Yellow RS 0.10 % 0.55 %	Golden Orange RS 0.25 % 1.40 %	Red RS 0.15 % 0.85 %	Carmine RS 0.15 % 0.85 %	Rubine RS 0.10 % 0.60 %
6-7 6 4-5	7 7 6	5-6 5-6 5-6	5 5 5	5-6 5 5	7 6-7 6-7
-	-	-	-	-	- 6-7 6-7
5 5 5 5	5 5 5 5	5 4-5 4-5 5	5 5 3 5	4-5 5 3-4 5	5 4-5 3-4 5
5 5 4-5 5	4-5 5 5 5	5 5 4-5 5	4-5 5 5 5	4-5 5 4-5 5	5 5 5 5
4-5	5	4-5	4-5	4-5	3
4	3-4	4	4-5	4-5	3-4
●	●	●	◐	◐	◐
● ○	● ○	● ●	● ○	● ●	● ○
● ● ●	● ● ●	● ● ●	● ● ●	● ● ●	● ● ●
0.3	1.6	3.2	free	1.1	free
free	free	free	free	free	free

# BEMACRON RS

## Dyes

A

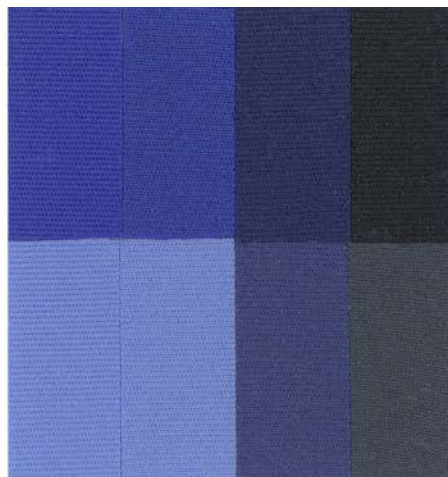
### ADVANCED

Improved and adapted ranges for versatile and economical use which meet high demands.

### DESCRIPTION OF RANGE

#### BEMACRON RS

Universal rapid-dyeing range for the exhaust process with high colour build-up. With the fast bath exhaustion and excellent levelling properties, the BEMACRON RS dyes permit very short dyeing processes with good levelling and reproducibility. All BEMACRON RS dyes have an excellent dispersion stability and are therefore very suitable for dyeing cross-wound packages.



Light fastness	3/1 1/1 1/12
Weathering fastness	3/1 1/1 1/12
Washing fastness 60 °C <sup>2)</sup>	CC PES PA CO
Perspiration fastness <sup>2)</sup> alkaline	CC PES PA CO
Chlorine bath water 20 mg/l	CC
Fastness to dry heat fixation 180 °C	Staining PES
Coverage of material variations	
Suitability for blends	PES/CO PES/WO
Dyeing process	HT Carrier Thermosol
AOX <sup>1)</sup>	%
Heavy metal content	

Royal RS 0.15 % 0.80 %	Blue RS 0.20 % 1.15 %	Navy RS 0.75 % 1.50 %	Black RS 1.30 % 3.90 %
5 5 5	5-6 5 5	5-6 5 5	6 5-6 5
-	-	-	-
4-5 5 3-4 5	5 5 4 5	4-5 4 2-3 4-5	4-5 4 2-3 4-5
5 5 5 5	5 5 5 5	5 5 4-5 5	5 4-5 4 4-5
4-5	4-5	4-5	4-5
3-4	4-5	3-4	3
●	●	●	●
● ○	● ○	● ○	● ○
● ● ●	● ● ●	● ● ●	● ○ ●
0.5	free	3.8	4.0
free	free	free	free

### Fastness information:

The fastness properties stated on the shade card were determined with 1/1 SD dyeing on polyester. Exceptions are the navy dyes (2/1 SD) and black dyes (3/1 SD). All stated fastness values are based on dyeings of the individual dyes.

Light fastness	DIN EN ISO 105-B02
Weathering fastness	DIN EN ISO 105-B04
Washing fastness 60 °C	DIN EN ISO 105-C06/C2S
Perspiration fastness	DIN EN ISO 105-E04
Chlorine bath water fastness	DIN EN ISO 105-E03
Fastness to dry heat fixation	DIN EN ISO 105-P01

### Coverage of material variations:

- These dyes cover fabric-related stripes very effectively.
- Depending on the shade and colour intensity, these dyes cannot cover texture differences and other fabric-related variations completely.
- These dyes cannot compensate for differences in the fabric.

### Suitability for blends:

- Suitable
- Suitable with restrictions
- Not suitable

### Dyeing process:

HT	High-temperature process (130 °C)
Carrier	Dyeing process at 98 – 110 °C with the addition of carriers
Thermosol	Continuous process

- Recommended
- Recommended in some cases
- Not recommended

<sup>1)</sup> Method of determination: DIN EN 1485

<sup>2)</sup> Post-fixing 30 s at 180 °C

The BEMACRON RS range fully complies with the requirements on the limits for impurities or by-products as specified in the MRSL of ZDHC (current version 1.1, December 2015, refer to [www.roadmaptozero.com](http://www.roadmaptozero.com)).

The appearance of dyes can vary due to different manufacturing methods. However, this does not affect the colour on the textile or the dye properties and fastnesses.

The data contained in this shade card is given to the best of our knowledge and belief. It does not guarantee specific product properties.

All information is subject to change without notice.

02/2018\_en

**CHT**  
SMART CHEMISTRY  
WITH CHARACTER.

[www.cht.com](http://www.cht.com)