

TEXTILE
SOLUTIONS.

Bezema
Colour
Solutions.

CHT

SMART CHEMISTRY
WITH CHARACTER.



BEMACRON SMART EE

■ BASIC

HIGHLY CONCENTRATED AND
ECONOMICAL DYES.

BEMACRON SMART EE

Dyes

B

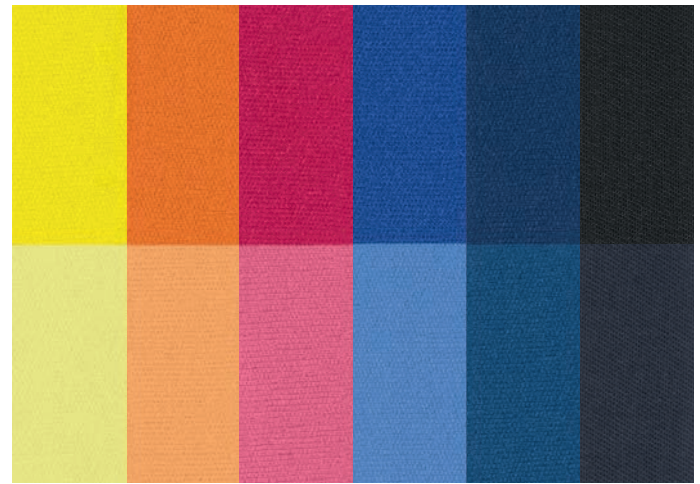
BASIC

Economical standard range, which meets normal requirements.

DESCRIPTION OF PRODUCT RANGE

BEMACRON SMART EE

Compact range of good combining, highly concentrated and economical dyes that meet highest ecological standards.



Light fastness	3/1 1/1 1/12
Washing fastness 60 °C ²⁾	CC PES PA CO
Perspiration fastness ²⁾ alkaline	CC PES PA CO
Chlorine bath water 20 mg/l	CC
Fastness to dry heat fixation 180 °C	Staining PES
Coverage of material variations	
Suitability for blends	PES/CO PES/WO
Dyeing process	HT Carrier Thermosol
AOX ¹⁾	%
Heavy metal content	

SMART Yellow EE 0.1 % 0.4 %	SMART Orange EE 0.2 % 1.1 %	SMART Red EE 0.1 % 0.7 %	SMART Blue EE 0.2 % 1.0 %	SMART Navy EE 0.7 % 1.5 %	SMART Black EE ³⁾ 0.6 % 1.8 %
7 7 6-7	7 7 7	6-7 6 6	6 6 6	5-6 5 5	5 4 4
4-5 5 4-5 5	5 5 4-5 5	5 5 3-4 4-5	5 4-5 3-4 5	5 4-5 2-3 4-5	5 4 2-3 4-5
4-5 4-5 3-4 4-5	5 5 5 5	5 5 5 5	5 5 5 5	4-5 4-5 4-5 4-5	5 4-5 4-5 4-5
4-5	5	4	4-5	4-5	5
3	4	4-5	4	4-5	3-4
●	●	●	●	●	●
● ●	● ●	● ●	● ●	● ○	● ●
● ● ●	● ● ●	● ● ●	● ● ●	● ○ ●	● ● ●
4.7	7.3	3.5	1.6	2.6	2.1
free	free	free	free	free	free

Fastness information:

The fastness properties stated on the shade card were determined with 1/1 SD dyeing on polyester. Exceptions are the navy dyes (2/1 SD) and black dyes (3/1 SD). All stated fastness values are based on dyeings of the individual dyes.

Light fastness	DIN EN ISO 105-B02
Weathering fastness	DIN EN ISO 105-B04
Washing fastness 60 °C	DIN EN ISO 105-C06/C2S
Perspiration fastness	DIN EN ISO 105-E04
Chlorine bath water fastness	DIN EN ISO 105-E03
Fastness to dry heat fixation	DIN EN ISO 105-P01

Coverage of material variations:

- These dyes cover fabric-related stripes very effectively.
- Depending on the shade and colour intensity, these dyes cannot cover texture differences and other fabric-related variations completely.
- These dyes cannot compensate for differences in the fabric.

Suitability for blends:

- Suitable
- Suitable with restrictions
- Not suitable

Dyeing process:

HT	High-temperature process (130 °C)
Carrier	Dyeing process at 98 – 110 °C with the addition of carriers
Thermosol	Continuous process

- Recommended
- Recommended in some cases
- Not recommended

The fastness properties of the dyed shades shown on the shade card on polyester correspond to 1/1 and 1/6 SD. Exceptions are the navy dyes (1/1 und 2/1 SD) and black dyes (1/1 and 3/1 SD).

The appearance of dyes can vary due to different manufacturing methods. However, this does not affect the colour on the textile or the dye properties and fastnesses. The colour intensity is normally set to 100 %. Deviations are listed in the current "commercial forms" leaflet.

The data contained in this shade card is given to the best of our knowledge and belief. It does not guarantee specific product properties. All information is subject to change without notice.

¹⁾ Method of determination: DIN EN 1485.

²⁾ Post-fixing 30 s at 180 °C

³⁾ This offer is not valid in the following countries:
Canada, China, Hong Kong, Indonesia, Japan, Taiwan, USA.

The BEMACRON SMART EE range fully complies with the requirements on the limits for impurities or by-products as specified in the MRSL of ZDHC (current version 1.1, December 2015, refer to www.roadmaptozero.com).



02/2018_en

CHT

SMART CHEMISTRY
WITH CHARACTER.

www.cht.com